

Simply Integrating with Rhythmedics® Tesla Jewels™ Pyramid Energy Version User Guide

Table of Contents

1. Introduction.....	2
2. How to Change Preset Integration Programs.....	3
3. Preset Integration Programs.....	4
3.1. <i>Focused Integration (Red)</i>	4
3.2. <i>Solfeggio Integration (Amber)</i>	4
3.3. <i>Body Blaster (Yellow)</i>	5
3.4. <i>Higher Integration (Green)</i>	5
3.5. <i>Power Integration (Turquoise)</i>	5
3.6. <i>DreamWeaver House Foundation Sleep (Blue)</i>	5
3.7. <i>Awesomism Integration into the Heart (Purple)</i>	6
3.8. <i>Prana Yama (White)</i>	6
4. Simply Integrating with Tesla Jewels.....	6
5. For Energy Sensitive Individuals.....	7
6. Your Wellness Number (Flicker Fusion Frequency).....	8
7. Flash-Drive Mode and Updates.....	10
8. Updating your Rhythmedics Instrument.....	12
9. Spectrum LED Indications.....	14
10. How Do I Know Its Working?.....	15
11. Technical Specifications and Safety.....	15
US FCC Part 15 and EU Conformance.....	16
Medical Disclaimer.....	16
Appendix A.....	17

List of Figures

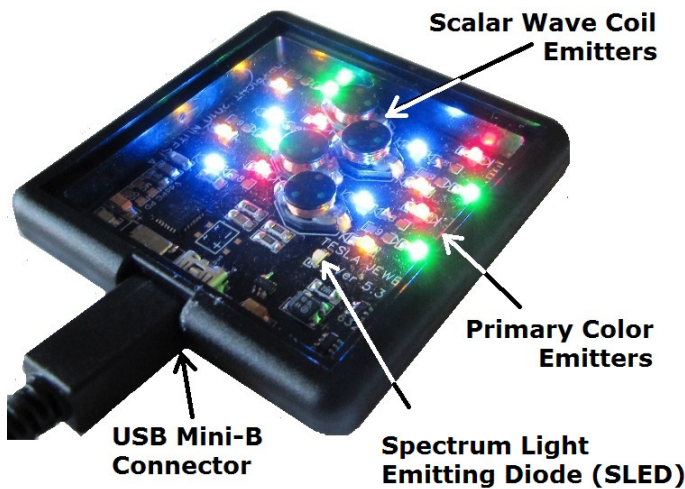
Figure 1 - Front of Tesla Jewels.....	2
Figure 2 - Back of Tesla Jewels.....	3
Figure 3 - Auto Play Pop-Up Window.....	10
Figure 4 - Rhythmedics Flash-Drive Contents.....	10
Figure 5 - Tesla Jewels Instrument Information.....	11
Figure 6- Focused Integration Frequency Profile.....	17
Figure 7 - Solfeggio Integration Frequency Profile.....	17
Figure 8 - Body Blaster Frequency Profile.....	18
Figure 9 - Higher Integration Frequency Profile.....	18
Figure 10 - Power Integration Frequency Profile.....	18
Figure 11 – DreamWeaver House Foundation Sleep Frequency Profile.....	19
Figure 12 – Awesomism Integration into the Heart Frequency Profile.....	19
Figure 13 - Prana Yama Frequency Profile.....	19

1. Introduction

Rhythmedics® Tesla Jewels™ elevates energy clearing and integration of physical and spiritual energies to a new level of wholeness. Blending the four elemental primary colors using near coherent Light Emitting Diodes with Scalar Wave producing Bio-Pulse Emitters through Fibonacci based Rife, Solfeggio and Awareness expanding frequencies, Tesla Jewels is a powerful energy body clearing, integration and wellness tool. Using Tesla Jewels™ is as simple as connecting it to its USB power source and placing it in your work or living space. The Pyramid Energy Version adds a 28.3 KHZ carrier signal to each program that is mixed (modulated) by the frequencies of each program to accelerate energy clearing and elevate the experience to even higher levels of awareness.

Tesla Jewels comes with a universal 5V USB power adapter, as well as a Type A USB to Mini-B cable. Always insert the Mini-B plug into the Tesla Jewels' USB connector FIRST, and then plug the other end of the cable into your computer, or power adapter into an appropriate power outlet.

Figure 1 - Front of Tesla Jewels



When power is first applied Tesla Jewels runs a series of internal tests, verifying the processor, its memory and the LED and Bio-Pulse emitters are functioning properly. When all self-tests complete the Spectrum Light Emitting Diode (SLED) located below the Elemental Primary Color LEDs, turns red then shifts to orange, yellow, green, turquoise, blue and finally white. It then turns off briefly followed

by four colored flashes to indicate the instrument's serial number, a yellow flash for Tesla Jewels and one more colored flash for software version). Tesla Jewels then starts the last program that was run and flashes the SLED as two heart-beat flashes to indicate that program. While it appears all four sets of Primary Color LEDs are continuously lit when Tesla Jewels are operating, they are actually alternating with Red and Green on and then Yellow and Blue on. Blending lightwave energies and Bio-Pulses at select frequencies elevates the integration of the light, or spirit, body with the physical. Added to this is the Pyramid Energy carrier frequency of 28.3 KHZ to enhance the energies to even higher levels. Placing a crystal on top of the

clear acrylic cover will amplify and disperse the emitted integration energies over a wider area.

Tesla Jewels can hold up to 8 unique integration preset programs, each with its own unique color to help you identify which one is selected and running. The possible preset program colors are as follows: 1-Red, 2-Amber, 3-Yellow, 4-Green, 5-Turquoise, 6-Blue, 7-Purple and 8-White (For Trial Programs). Tesla Jewels also includes the ability to measure, report and run you personal Wellness Number which flashes Violet twice every ten seconds. Tesla Jewels will flash a double 'heart-beat' color every 10 seconds to indicate which preset integration program is running. Some presets change the color while running to indicate what integration stage is being emitted and is explained in the section detailing each preset integration program later in the document.

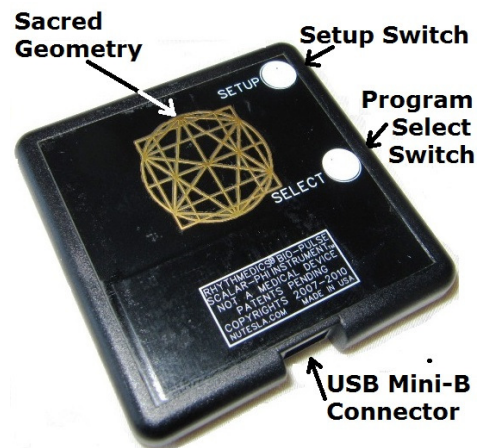
2. How to Change Preset Integration Programs

There are two white dome switches on the back of Tesla Jewels. The upper one is labeled SETUP and the lower one is labeled SELECT. These can be seen in the figure below. Changing preset programs is done while Tesla Jewels is running by pressing and releasing the SELECT dome switch. This is best accomplished by holding Tesla Jewels in your left hand with your thumb on the front of Tesla Jewels near the middle edge of the left side of the clear acrylic cover and your left forefinger on the back of Tesla Jewels resting on the SELECT dome switch. You should feel the slight bump of the SELECT dome switch under your forefinger. While Tesla Jewels is powered on and being held between your thumb and forefinger as described, squeeze Tesla Jewels between your thumb and forefinger until you feel a slight 'give' or 'detent' under your forefinger and then release the pressure.

Figure 2 - Back of Tesla Jewels

The SLED, which is positioned to the right and just below the array of elemental primary color LEDs, will flash an Amber heart-beat to indicate Tesla Jewels has changed to Preset #2. Press your left thumb and forefinger together again in the same position and feel the detent in the dome switch and hold for one second and release and the SLED will flash a Yellow color heart-beat flash indicating Preset #3 is now selected. Pressing SELECT again will step to preset #4 and the SLED will flash Green.

Repeating this process and Tesla Jewels will step through all stored presets and



then wrap around to Red for Preset #1. You may also connect Tesla Jewels to your computer using the included USB cable to see a list of installed presets. This is explained in section *8 Flash-drive mode and Updates*. Tesla Jewels will ‘remember’ the newly selected preset program only after it has run this preset for one full cycle. Then the next time you plug Tesla Jewels into its power adapter it will then run the new selected integration program after completing its start-up tests.

3. Preset Integration Programs

Tesla Jewels include all eight Preset Programs. You can also keep other Preset Integration Programs on your computer that can be used to replace ones on your instrument. All Preset Integration Programs are designed to raise the vibrational energies of the persons within its field of influence as well as support the body’s internal circadian rhythm by creating entrainment ultradian cycles. Most programs are designed to run for 90 minutes and then repeat, as this is a typical ultradian cycle length. Specialized programs intended for a single use during the day have shorter run times as explained below.

3.1. Focused Integration (Red)

Focused Integration is a 90 minute repeating program to facilitate focused integration of the different energy bodies while maintaining a relaxing energy level. This preset tends to increase the energies in an area over time and is recommended for individuals that tend to get sleepy during the day.

3.2. Solfeggio Integration (Amber)

Solfeggio Integration is a 90 minute repeating program featuring the Solfeggio scale to awaken and integrate your energy centers during any activity. This Preset changes the flash type and color of the SLED as each Chakra’s frequencies are emitted. The Amber heart-beat is seen for the starting-up and winding-down frequencies, those below the Solfeggio scale. When the Root Chakra frequencies are emitted the SLED changes to a Red ‘wave’ (a gradual brightening and dimming of the light), Amber for Sacral, Yellow for Solar Plexus, Green for Heart, Turquoise for Throat, Blue for Third-eye, Purple for Crown and White for expanded awareness. The colors then reverse as the program comes back down. This preset is recommended for continual use to clear an area, and its influence will expand the longer Tesla Jewels are operating.

3.3. Body Blaster (Yellow)

Body Blaster is a 90 minute repeating program featuring broad spectrum Rife Frequencies to boost the wellness of both your physical and ethereal bodies. This program addresses the most common complaints of the Psora and Tuberculin miasms. This preset is recommended for continual use to increase wellness and is great to use in reception and waiting areas.

3.4. Higher Integration (Green)

Higher Integration is a 90 minute repeating program featuring frequencies based on the work of Robert Monroe* to aid in integration at the highest levels of awareness. This preset also runs through the Solfeggio Chakra frequencies, to ground and balance the physical while launching the spirit or light body on a journey of expanded awareness. The colors of the SLED change as explained in Solfeggio Integration.

*NuTesla is not associated with The Monroe Institute.

3.5. Power Integration (Turquoise)

Power Integration is a fast acting powerful integration program that runs a repeating 30 minute cycle. This is recommended for when you need a quick boost in your energy or space. It is not recommended to leave this preset program running on a continual basis.

3.6. DreamWeaver House Foundation Sleep (Blue)

This is a sleep program for Tesla Jewels modified for the DreamWeaver House Foundation in NYC to be used for deep relaxation and sleeping. The frequencies presented support Solfeggio based resonance to maintain cleared energy centers and balanced Chakras and are sustained for longer steps to encourage deep relaxation and sleep. This program is a repeating sleep cycle that begins at 110 minutes and shrinks to shorter and shorter cycles to encourage natural awakenings after 7 and 1/2 hours. After 12 hours of running control is passed to Preset #2, Solfeggio Integration and the user must manually reselect this sleep preset. Alternatively, if the Tesla Jewels are disconnected from their power adapter before 12 hours has passed, the Tesla Jewels will restart with the sleep preset when reconnected to the power source.

3.7. Awesomism Integration into the Heart (Purple)

Awesomism Integration into the Heart is a 47 minute ASD Integration preset developed in collaboration with Suzy Miller, creator of the Awesomism Certification Process. It is designed to resonate first with the light or spirit body and create a field of attraction to these higher vibrational energies. The frequencies then slowly descend drawing the spirit into the crown Chakra and down into the Heart. The energies then release and allow the spirit to return to its full light body state of vibration. The Preset can be manually stopped at this point, 32 minutes from its starting time, or allowed to continue and attract the light body into the Heart Chakra over the next 4 minutes. The preset can also be stopped at this point to support a new level of connectedness between the heart and spirit. If allowed to continue to run for the full 47 minutes the light body will be fully grounded to support a new level of connectedness between the physical and spiritual bodies.

3.8. Prana Yama (White)

Prana Yama is a 60 minute repeating preset program that supports the sacred Breath of Life technique of focusing energies into the middle body. It is recommended for use during Yoga meditations and to help re-center the body's energies. As the frequency profile in the Appendix section shows, the frequencies oscillate up and down to support drawing your awareness into the center of your being.

4. Simply Integrating with Tesla Jewels

Tesla Jewels can be used in a variety of applications to clear unwanted energies and improve the integration of mind, body and spirit. Most often Tesla Jewels are placed in your living space with the light emitted upward. Placing a crystal or other transparent or translucent object on top of Tesla Jewels will help disperse the light energies in more directions and will clear and positively charge the object. In addition to the light energies emitted, Tesla Jewels also produce a torus (donut) shaped electromagnetic field of healthy energies approximately 6 feet (2 meters) in all directions.

Tesla Jewels can be used in your workspace as well. In most applications, the Tesla Jewels should be placed so as to be inconspicuous. The longer they run, the clearer an area becomes. Tesla Jewels can also be placed directly against the body, with the lights shining on bare skin. Some users have reported sleeping with the Tesla Jewels located under his or her neck, or face down on his or her abdomen.

They can be used during Yoga, meditation and prayer by being placed directly in front of you, or even behind you to light your spine.

Tesla Jewels can be left on continuously and the longer Tesla Jewels runs the more effective it will be in clearing unwanted energies while restoring the natural balance of your ultradian rhythms.

Tesla Jewels can be placed in a waiting area or any place people congregate to create a clearer and more inviting space. Tesla Jewels is great for use in classrooms and playrooms with children of all ages. Tesla Jewels is also safe to use with infants.

Tesla Jewels can be used where foods are prepared and served. It can be placed above serving dishes or beverage containers to clear the energies in your consumables.

You can clear unwanted energies in personal items you carry on yourself, such as rings, necklaces, watches, other jewelry, cell phone, tablets, pens, wallet, keys, all without causing any damage or erasure to any electronic or magnetic media, including credit cards. Simply place the items on or within the lighted field of Tesla Jewels for an hour or longer.

Crystals or other healing instruments can be placed on or within the lighted field of Tesla Jewels to clear and recharge their energies.

Tesla Jewels should not be used when driving at night as the light may interfere with your ability to see objects outside the vehicle.

5. For Energy Sensitive Individuals

Individuals who are sensitive to subtle and informational energies may 'feel' or 'sense' the visible and invisible energies emitted from Tesla Jewels when running. The Fibonacci quartz crystal ensures all the frequencies produced by Tesla Jewels are pure and should never cause any discomfort. If you do experience any sensations when Tesla Jewels is running it may be that your body's energies are out of alignment and it may take a few days for them to shift into harmony with the Fibonacci based frequencies. If this is the case it is recommended use the Wellness Number procedure explained below to help shift your energies. Then use Tesla Jewels on Preset #2, Solfeggio Integration, near your work area, rather than within immediate reach. Within a few days you will find your energies have shifted to be in alignment with the Fibonacci based Bio-Pulses and can use Tesla Jewels without any

6. Your Wellness Number (Flicker Fusion Frequency)

Your Rhythmedics Tesla Jewels includes the ability to measure and report your personal Wellness Number, also referred to as your Critical Flicker Fusion (CFF) number. It is recommended to read this section fully in advance of measuring your Wellness Number. After reading this section you can run the test multiple times to get familiar with the procedure.

Flicker Fusion is the rate at which a distinctly flashing on and off light appears to fuse into a constantly illuminated light. It was discovered in 1945 during testing of WWII pilots returning home after the war with Post Traumatic Stress Disorder that their recovery could be measured objectively by tracking their flicker fusion frequency, which NuTesla calls the Wellness Number. The higher the numbers the further along the pilots were in their recovery. Your wellness number is a personal indicator of your overall wellness. Due to differences in the physiology of our eyes you cannot compare your wellness number to someone else's. This feature is intended to allow you to track your personal wellness level. The higher your wellness number, the higher your personal wellness level.

NuTesla discovered that in addition to being useful for tracking your personal wellness, your flicker fusion frequency can be used to assist in shifting your body's frequency to a healthier state by emitting your frequency. For this reason, after following the directions below to measure and report your Wellness Number, Tesla Jewels will then use your flicker fusion frequency to run a ten minute program during which time we recommend you place Tesla Jewels under your pillow, lie down and relax to your personal frequency.

Flicker Fusion occurs when our eyes see a rapidly flashing light increase in frequency (the number of times it turns on and off in one second) until the light appears to be steadily lit. Research going back to the early 1900's has shown the higher a person's flicker fusion frequency is (the more times in one second that a rapidly flashing light crosses the threshold of appearing to be steadily lit to flickering) indicated better overall wellness and lower stress levels.

To activate this feature while Tesla Jewels are running press and hold the SETUP switch for 2 seconds and then release it. If you press and hold SETUP for 5 seconds it will cause Tesla Jewels to switch-over to the flash-drive mode discussed in a later section. The Elemental Color LED Array will turn off and the Spectrum LED will flash Red 6 times to indicate your Wellness Number testing is beginning. After these 6 flashes the Red LED will begin flashing very rapidly, appearing to be lit

continuously. During the Wellness Number testing the Red LED is always flashing on and off for equal periods of time, referred to as a 50% duty cycle. The periods of on and off time are initially very short, equivalent to a flashing rate of about 120 cycles per second, far above the human eye's ability to perceive.

Hold Tesla Jewels between your thumb and forefinger close to your face with the LED directly in front of your dominant eye and your forefinger finger on the SETUP switch to press it when you see a definite flickering of the LED. As the program runs the on and off times are lengthened and the apparently constantly lit Red LED appears to start flickering, which to some looks like water boiling when staring directly into the Red LED. As the frequency continues to slow this boiling appearance begins to be more pronounced where there is still no time when the LED appears to be off. As the frequency continues to slow this flickering becomes a distinct on and off flashing. At the point when you see the definite flickering press the SETUP switch to stop the test.

The Red LED will turn off and Tesla Jewels will then report your two digit Wellness Number as two series of flashes, the first series of flashes uses the white LED to count out the tens digit (e.g. four white flashes is 40, 5 white flashes is 50, and so on) and the second series of flashes uses the green LED to count out the ones digit (e.g. 6 green flashes is 6). Adding the two series of flashes together yields your personal Wellness Number (e.g. 46 or 56 from the example above). The upper limit is 89. If the ones digit is a zero it will be reported by a single flash of the Blue LED (the tens digit cannot be zero). If you counted 5 white flashes then saw a blue flash your Wellness Number would be 50.

After flashing your wellness number Tesla Jewels flashes two purple flashes to indicate it is running a 10 minute therapy session using your personal Wellness Number. These two purple flashes occur every five seconds while your personal frequency is being emitted. After 10 minutes Tesla Jewels restarts the previously run integration program. Record and compare your Wellness Number over time to assess your overall wellness. It is recommended to measure and record your personal Wellness Number on a regular basis to track your overall wellness, such as once a week. A higher number shows an improvement in wellness. If you do not press the SETUP switch the test will end and Tesla Jewels will start running the previous integration program without reporting any Wellness Number.

7. Flash-Drive Mode and Updates

Your Rhythmmedics Tesla Jewels includes an integrated Flash-Drive used for updating and upgrading your Instrument, and for reviewing installed preset programs. This feature is only accessible when Tesla Jewels is connected to a computer via the included USB Mini-B to Type A cable. Connect Tesla Jewels to your computer and press and hold the SETUP switch until the Spectrum LED begins flashing green on and off or green and red. Do not connect through an external USB hub. The first time you connect Tesla Jewels to a new computer it will flash red and green while your computer automatically installs the standard device driver for the Rhythmmedics Flash-Drive. A pop-up window may appear prompting you to open the drive to view the files.

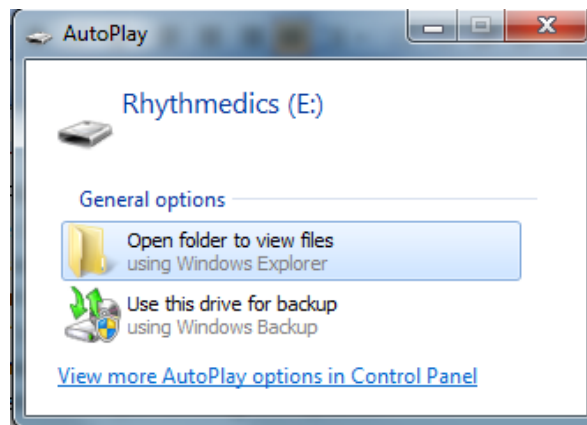


Figure 3 - Auto Play Pop-Up Window

There should only be one file on the Rhythmmedics Flash-Drive named NUTESLA.HTM.

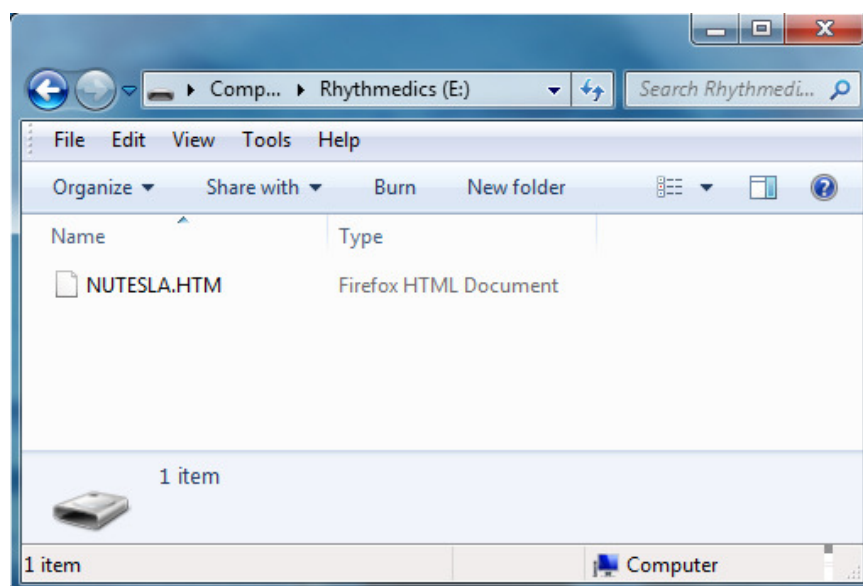
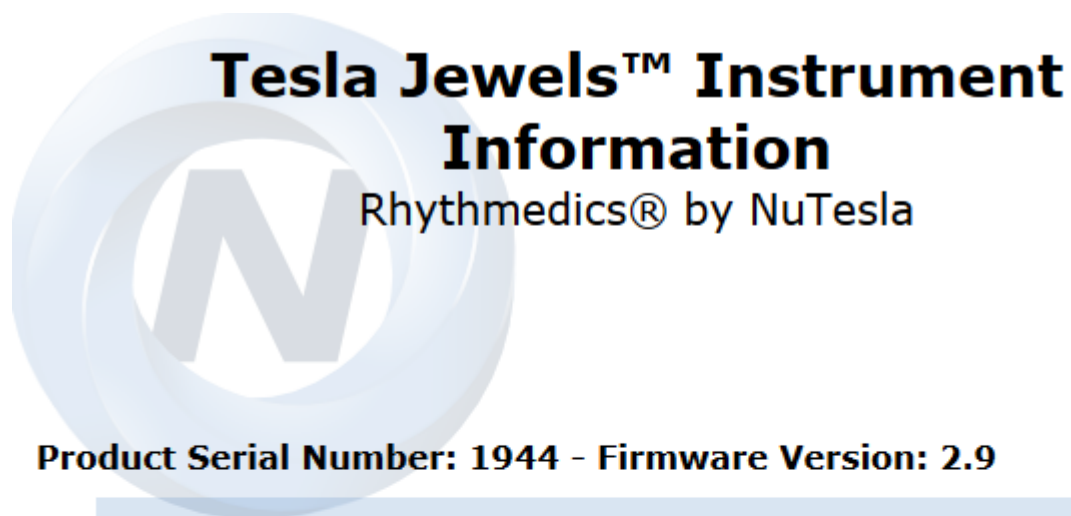


Figure 4 - Rhythmmedics Flash-Drive Contents

Opening this file will open your default web browser and display the currently installed preset programs. If you are connected to the Internet additional details about your instrument will be displayed. This includes your instrument's Serial Number and Firmware Version as seen in the figure on the next page. NuTesla instruments work best with Mozilla Firefox, Google Chrome and Safari web browsers. Security restrictions in Internet Explorer prevent the complete information from being properly displayed.



Pyramid Programs

1. Red ● Focused Integration [show more](#)
2. Amber ● Solfeggio Integration [show more](#)
3. Yellow ● Body Blaster [show more](#)
4. Green ● Higher Integration [show more](#)
5. Turquoise ● Power Integration [show more](#)
6. Blue ● DreamWeaver House Foundation Sleep Protocol [show more](#)
7. Purple ● Awesomism Integration into the Heart [show more](#)
8. White ● Prana Yama [show more](#)

Figure 5 - Tesla Jewels Instrument Information

You can exit the flash-drive mode by unplugging Tesla Jewels and reconnecting it without pressing any switches or by simply pressing the SELECT switch once.

8. Updating your Rhythmedics Instrument

You must use a Windows or Linux based computer to do updates. If you only have access to a MacOS computer please contact NuTesla for assistance. **Rhythmedics files are not directly executable on your computer, they must be copied to the Rhythmedics flash-drive to work.** Rhythmedics files have an .RMx filename extension, where the 'x' may be any letter or number to identify the specific file type. Program and data updates have a .RMD filename extension and critical updates have a .RMC filename extension. Rhythmedics files are encrypted and may be keyed to only your instrument or may be generally applied. Updates can only be applied to the specific instrument type for which it was developed.

To enumerate the USB Flash-drive in your Tesla Jewels follow the steps below:

1. Insert the USB cable Mini-B connector into the Rhythmedics instrument to be updated before inserting the other end into your computer
2. Firmly press and hold the SETUP switch while inserting the larger flat USB A connector end of the USB cable into a spare USB port directly on your computer (Windows, Mac or Linux computer with USB Flash-drive support). **Do not connect through an external USB hub.**
3. When the Spectrum LED (SLED) on the instrument begins flashing Green on and off, release the SETUP switch
 - a. If the SLED does not turn on, ensure the USB cable is properly inserted into your computer and the USB port is enabled on your computer via your device or driver manager program
 - b. If the SLED flashes red and green this is an indication that your computer is installing the standard USB flash-drive driver, which is normal. Wait for the driver to be installed as indicated by the SLED changing to green only flashing on and off
 - c. If flash-drive is enumerated and the SLED flashes red or yellow on and off only then skip to step 9 to follow the directions to remove the previously failed update files
 - d. If the SLED flashes blue on and off remove the USB A connector from the computer and reinsert it while firmly pressing and holding only the SETUP switch
4. The instrument is now enumerated as a USB flash-drive named "Rhythmedics" and you should have an option on the screen to open the drive folder to view its contents. If not, then follow your computer's procedures to view the contents of a removable media device

5. Open the Rhythmedics Flash-drive folder to view its contents. You should see only one file named “NUTESLA.HTM” This file lists all installed preset programs
6. If you received the update via an email message follow your email client’s procedures for saving an attachment, usually clicking on File, and Save Attachment. If downloading from the NuTesla website, then click on the download link and select the ‘SAVE’ option to save the file to your computer.
 - a. When prompted where to save the attachment (the update .RMD file) select a folder or the desktop on your computer. Do not save the file directly to the Rhythmedics drive.
 - b. Open the folder containing the update file and copy and paste it to the Rhythmedics Flash-drive, or ‘drag-and-drop’ it on the Rhythmedics Flash-drive
7. The Rhythmedics instrument will process the update file and restart, causing it to logically disconnect from your computer and then re-enumerate. During this process the SLED may briefly flash Red and Green, this is normal. The SLED will change to solid Green when done
8. Your NuTesla Rhythmedics Instrument is now updated and ready to use once disconnected from the USB port. You can press the SELECT switch to reset your Instrument and restart it in its base mode.
9. If an error occurs during the update process the SLED will flash Red on and off and an ERROR.HTM file will be generated in the Rhythmedics flash-drive folder
 - a. Your instrument will still operate normally if an error occurs, but will not be updated
 - b. Select all files on the Rhythmedics flash-drive and delete them at the same time, then repeat steps 5 through 8 one more time.
 - c. If the second attempt fails notify NuTesla Support (support@nutesla.com) via email by copying the ERROR.HTM and the .RMD files from the flash-drive before deleting them again and attaching them to the email message

9. Spectrum LED Indications

In addition to indicating which preset program has been selected and running, the Spectrum Color LED (SLED) is also used to report internal errors. The following is a summary of SLED indicated errors and corrective steps:

- A dim constant red indicates a correctable flash memory error occurred, simply unplug the instrument and reconnect it to the power source with no switches pressed to allow it to self-correct
- Blue flashing on and off indicates an invalid boot attempt, to correct reconnect to your computer with no switches pressed
- Red flashing on and off indicates an invalid boot attempt, reconnect to computer while only pressing SETUP switch. This may also indicate that your computer is missing the standard flash-drive software driver. Rhythmedics Flash-Drive mode works with all Windows (XP or later), Mac (OS 10 or later) and Linux/Unix/Ubuntu computers. If Red flashing occurs after attempting to process an update file then the update failed. Open the Rhythmedics drive and open the ERROR.HTM file to identify the problem. Even if an update fails to process, your instrument will still operate normally, simply delete all the files on the flash-drive and restart your instrument. Further details are in the previous update section.
- Red and Green alternating, USB drivers are being loaded by the host computer for the first time your instrument has been identified as a flash-drive; this should change to flashing green on and off when the drivers are successfully loaded
- Red and Blue alternating, invalid boot attempt, reconnect power and ensure no switches are pressed
- Green flashing on and off indicates Rhythmedics Flash-Drive active, no response required
- Green on solid indicates Rhythmedics Flash-Drive successfully processed the update file that was copied to it, press SELECT once to restart the Instrument
- Yellow Flashing indicates command processed, Open README.HTM file and follow instructions
- Green and Blue alternating indicates memory checksum error, restart and if it repeats contact NuTesla

- Yellow and Blue or Yellow and Red alternating indicates Bio-Pulse emitter error, restart and if it repeats contact NuTesla
- Solid White, indicates a flash memory update error, which is self-corrected by removing the USB cable and reinserting it without pressing any switches

10. How Do I Know Its Working?

In addition to seeing the sixteen elemental primary color LEDs you can also hear the Scalar Wave Bio-Pulses by placing Tesla Jewels flat against the back of a headphone next to your ear. Tesla Jewels will not interfere with electronic devices.

11. Technical Specifications and Safety

Tesla Jewels consist of a Fibonacci Quartz Crystal clocked microprocessor with stored preset programs to generate the specific and precise frequencies emitted by the four Bio-Emitters and sixteen elemental primary color LEDs. The power source is 5 Volts DC and is provided through a standard Mini-B USB connector and accompanying power adapter. Tesla Jewels operate at approximately 250 milliamps per hour of current, which varies depending upon the frequency being emitted.

There are three primary colors of light (red, green and blue) and three primary pigments (red, yellow and blue). Combining these two primary color sets creates the four elemental primary colors used in Tesla Jewels. These near coherent Light Emitting Diodes (LEDs) are of the following wavelengths and brightness:

- Red, Peak Wavelength 650 nanometers @ 1000 millicandles each
- Yellow, Peak Wavelength 590 nanometers @ 900 millicandles each
- Green, Peak Wavelength 525 nanometers @ 900 millicandles each
- Blue, Peak Wavelength 460 nanometers @ 450 millicandles each

1000 millicandles is equivalent to 1 candle power, a common light intensity measurement. The blue LEDs are intentionally dimmer than the other colors for safety reasons as bright blue light can cause eye damage over an extended period of time. Tesla Jewels use of these color sets and brightness LEDs prevents such damage from occurring and they may be used continuously without any safety precautions other than not staring directly into the Tesla Jewels for more than one minute. Staring or looking at Tesla Jewels from the side at any angle other than directly above it is safe for any period of time. Any color persistence seen as shadows after looking away will dissipate in direct correlation to the time spent staring into the LEDs.

The four Bio-Pulse emitters are designed to emit scalar waves extending horizontally through the four sides of the enclosure through the use of biphasic pulses that travel through both the LEDs and Bio-Pulse emitters, creating a unique form of electromagnetic scalar waves. The measurable electromagnetic flux of the Bio-Pulse emitters is less than 0.1 NanoTeslas at the surface of the Tesla Jewels. Unlike electromagnetic flux that diminishes at the inverse square of the distance from the source, scalar waves retain their strength and integrity over theoretical infinite distances.

There are no exposure limits for Tesla Jewels' Bio-Emitters.

US FCC Part 15 and EU Conformance

Tesla Jewels is a Class B Digital Device and complies with Part 15 of the FCC Rules. Operation is subject to the following two conditions: (1) this device may not cause harmful interference, and (2) this device must accept any interference received, including interference that may cause undesired operation. FCC ID YAL-585A53P

Tesla Jewels conforms to EU requirements for US defined Class B Digital Devices.

Medical Disclaimer

Tesla Jewels is not a medical device. It is not intended to diagnose, prevent, cure, treat or mitigate any illness. Never make any changes in your medications or medical treatment as a result of the use of Tesla Jewels without consulting with the prescribing professional. Never place Tesla Jewels directly over any electronic medical device, such as a cardiac pacer or insulin pump.

Tesla Jewels is a NanoTesla device and is not regulated by the US FDA. Tesla Jewels complies with US FDA Good Manufacturing Practices and published guidelines for Medical Devices. Each Tesla Jewels is individually serialized as can be seen in the Flash-drive mode. If any adverse events are suspected with Tesla Jewels please discontinue using and contact NuTesla Support immediately (support@notesla.com). These statements have not been evaluated by the US FDA.

Tesla Jewels is protected by US Patent 8,088,057 and other patents pending.

Appendix A

Preset Program Frequency Profiles

The following graphs provide a profile for all the included preset programs and the range of frequencies emitted. Each preset program repeats after a cycle. The scale at the bottom of each graph provides the time in minutes each frequency is emitted for each program step.

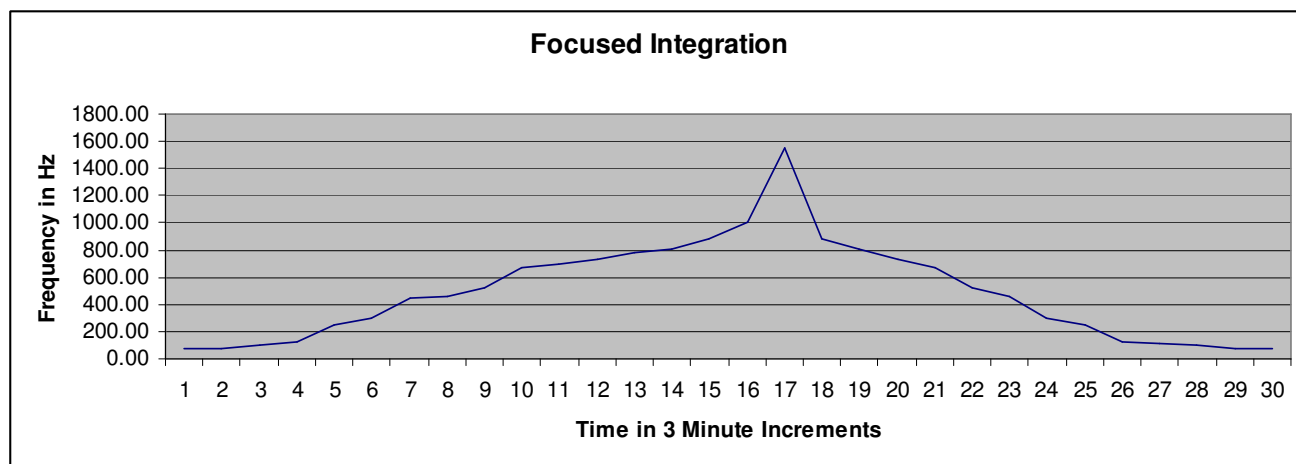


Figure 6- Focused Integration Frequency Profile

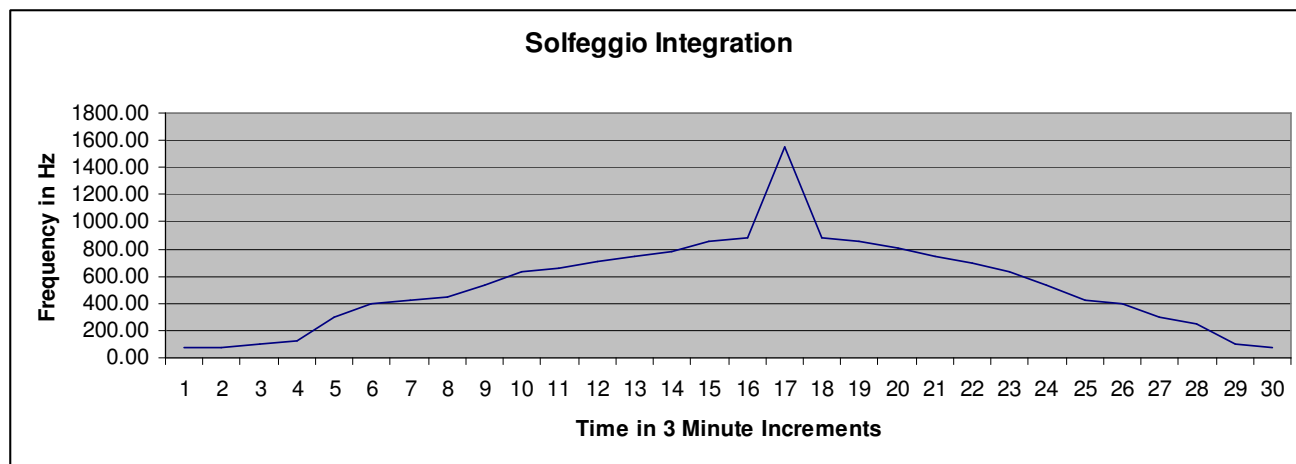


Figure 7 - Solfeggio Integration Frequency Profile

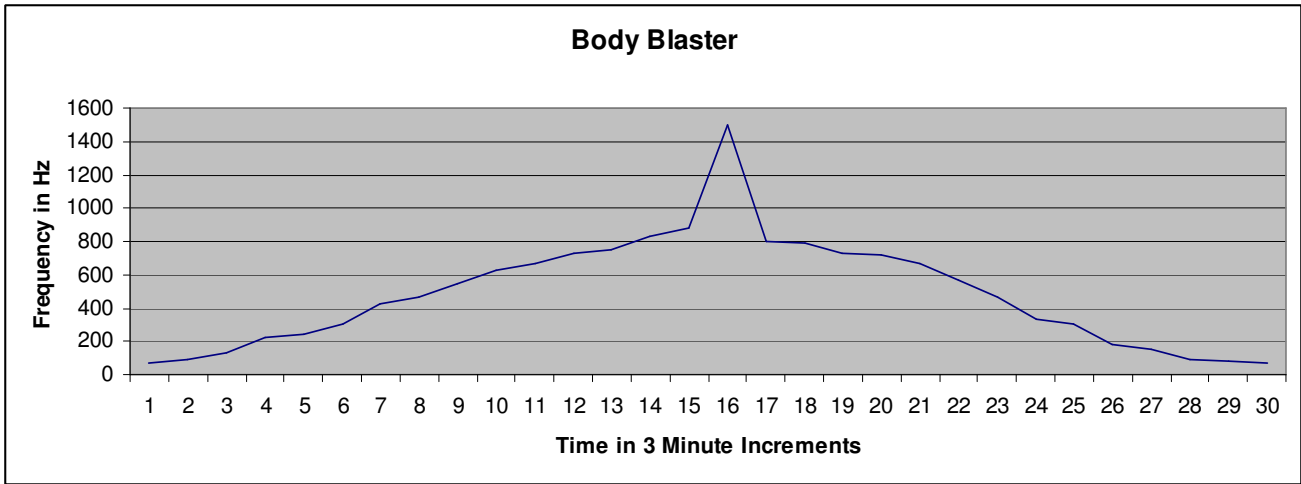


Figure 8 - Body Blaster Frequency Profile

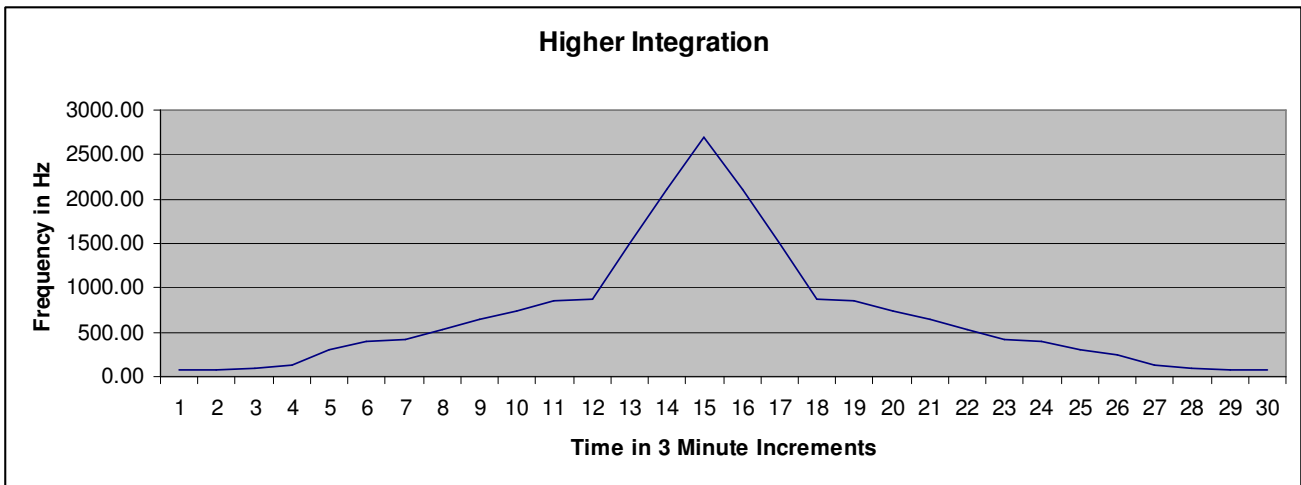


Figure 9 - Higher Integration Frequency Profile

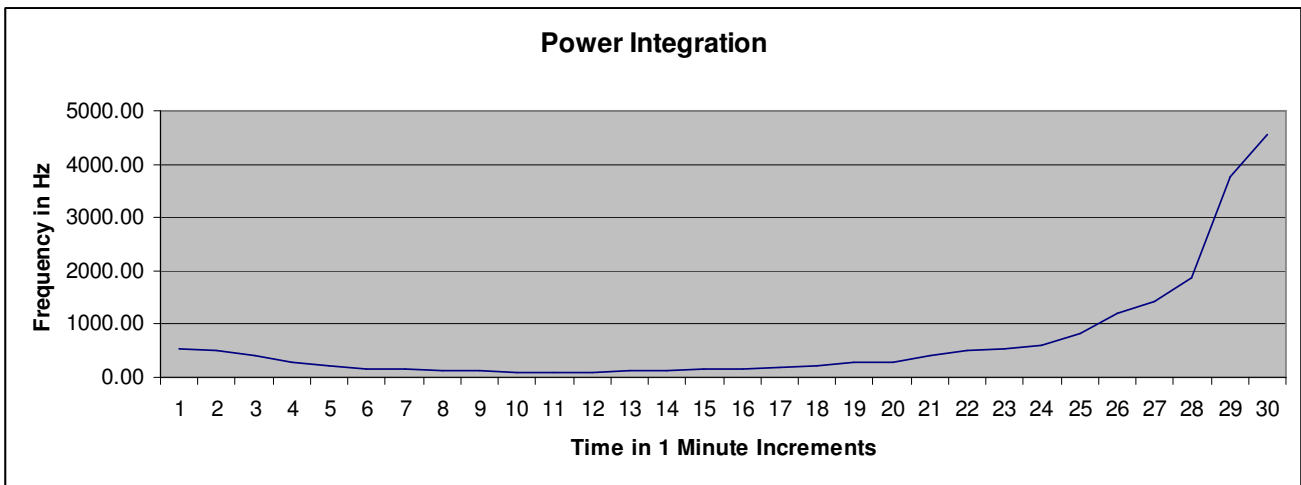


Figure 10 - Power Integration Frequency Profile

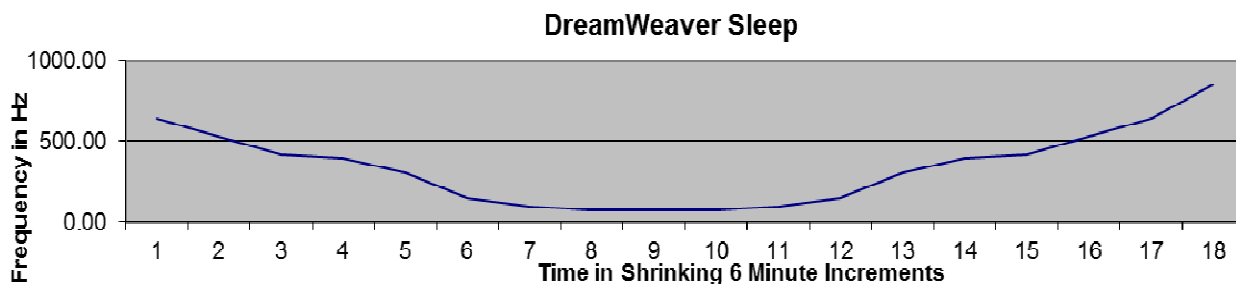


Figure 11 – DreamWeaver House Foundation Sleep Frequency Profile

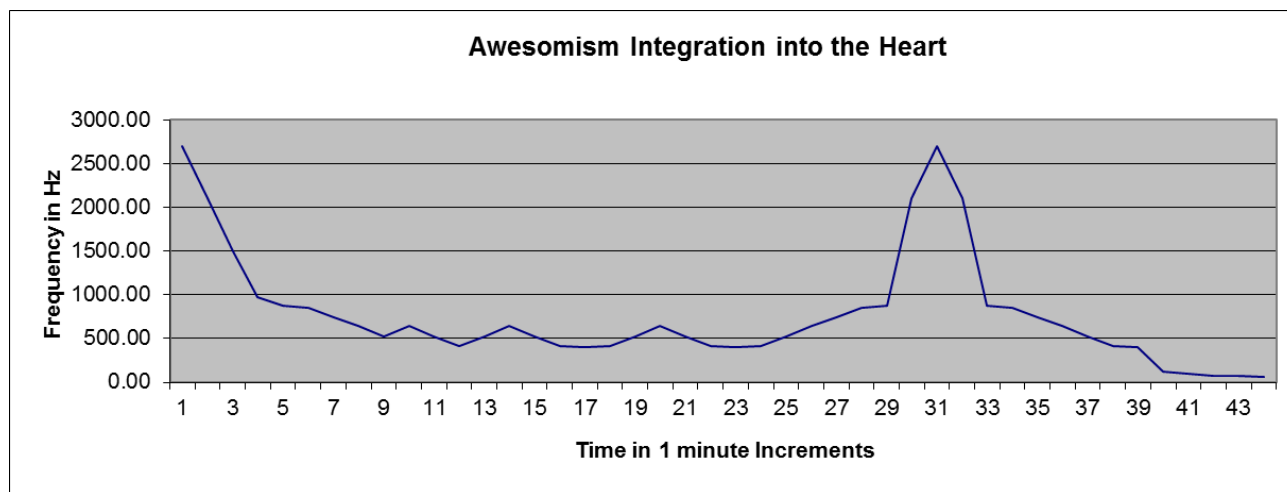


Figure 12 – Awesomism Integration into the Heart Frequency Profile

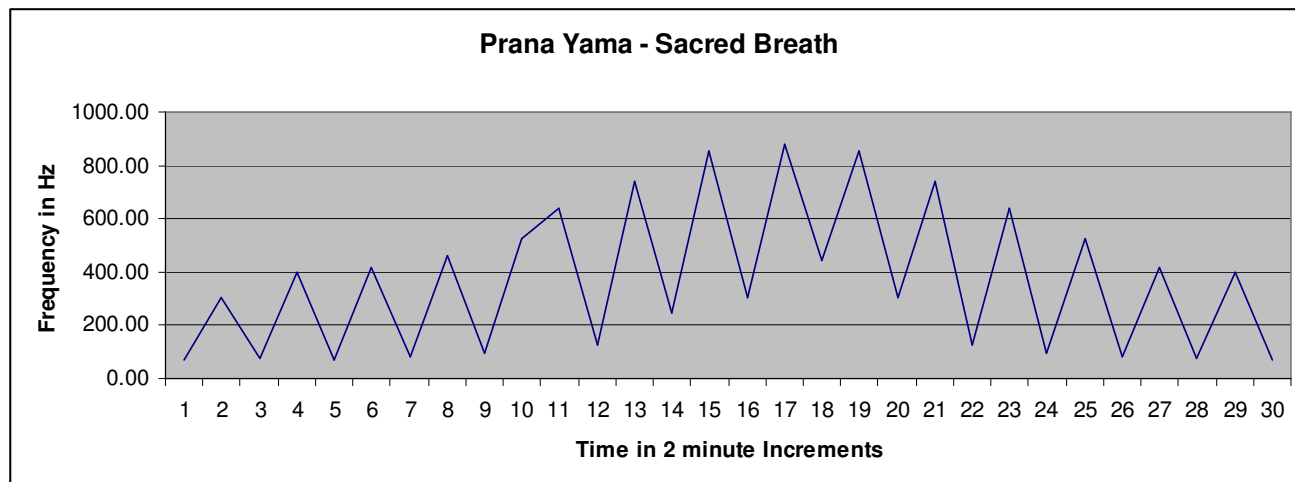


Figure 13 - Prana Yama Frequency Profile